

4056 DRUID

5 BEDROOMS | 5.2 BATHS | 6,316 SQUARE FEET
\$2,999,000 | HPISD | 50x227 LOT SIZE



PLATINUM HOMES by
MARK MOLTHAN

Stunning new construction by Mark Molthan situated in Volk Estates. This transitional home offers a refreshing layout with exquisitely proportioned living areas designed to capture natural light. The large lot and backyard allows for a sunny space and room to add a pool and play area.

Fall 2018 Completion.

FEATURES

- Study
- Game room
- Formal Dining
- Covered Patio
- Marble Countertops
- Miele Coffee Maker
- WOLF-SUB ZERO Appliances
- Home Headquarters
- Elevator Optional
- His and Her Closets
- Large Master Suite
- Bar (downstairs)
- Three-Car Garage
- Limestone & Marble Fireplaces

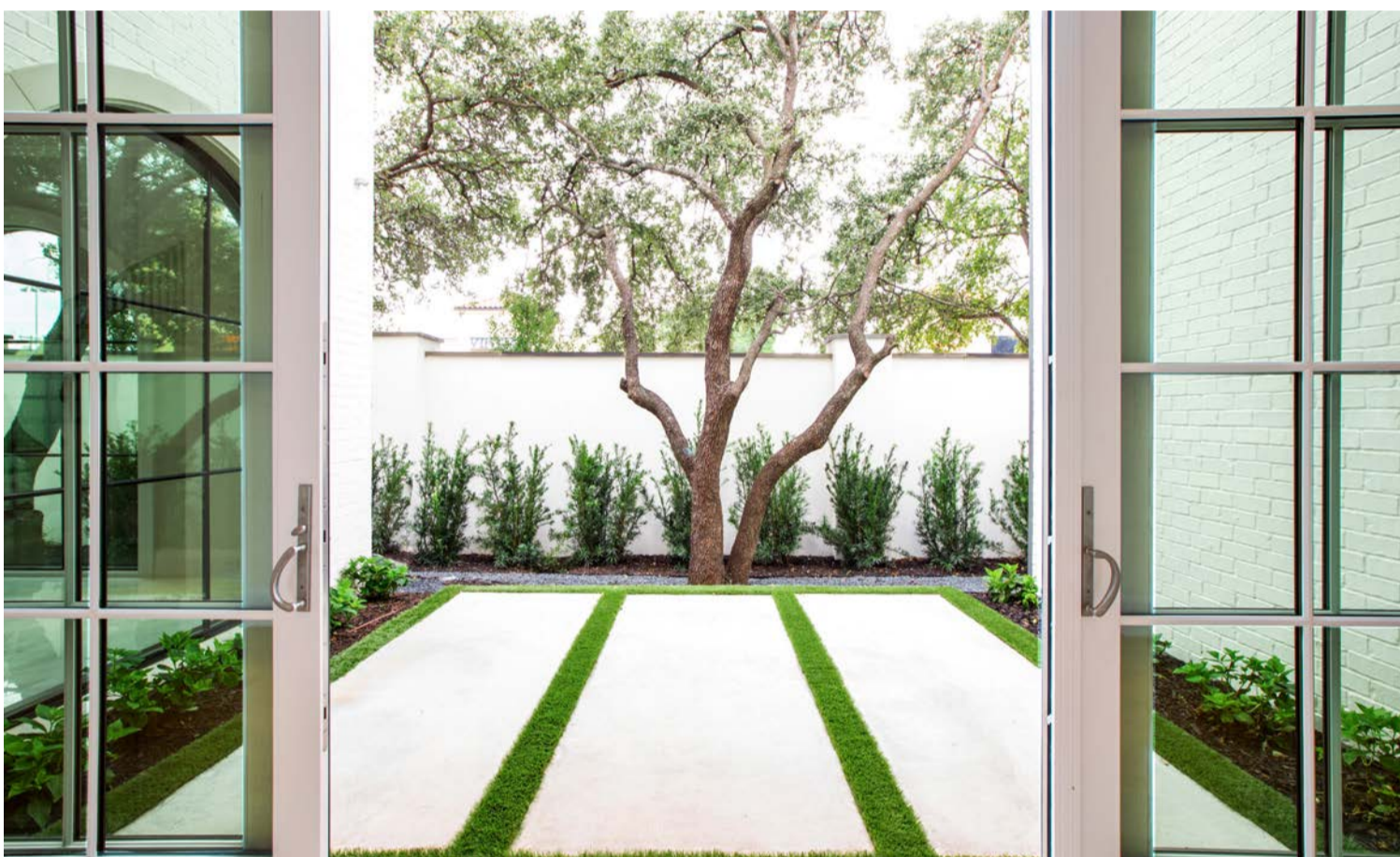
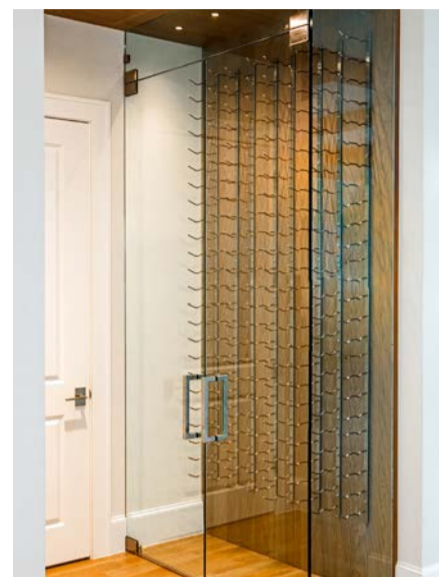
For additional information:
Katie Schortman | 214.206.7648

www.platinumserieshomes.net | Mark Molthan 214.908.5315

4056 DRUID

5 BEDROOMS | 5.2 BATHS | 6,316 SQUARE FEET

\$2,999,000 | HPISD | 50x227 LOT SIZE

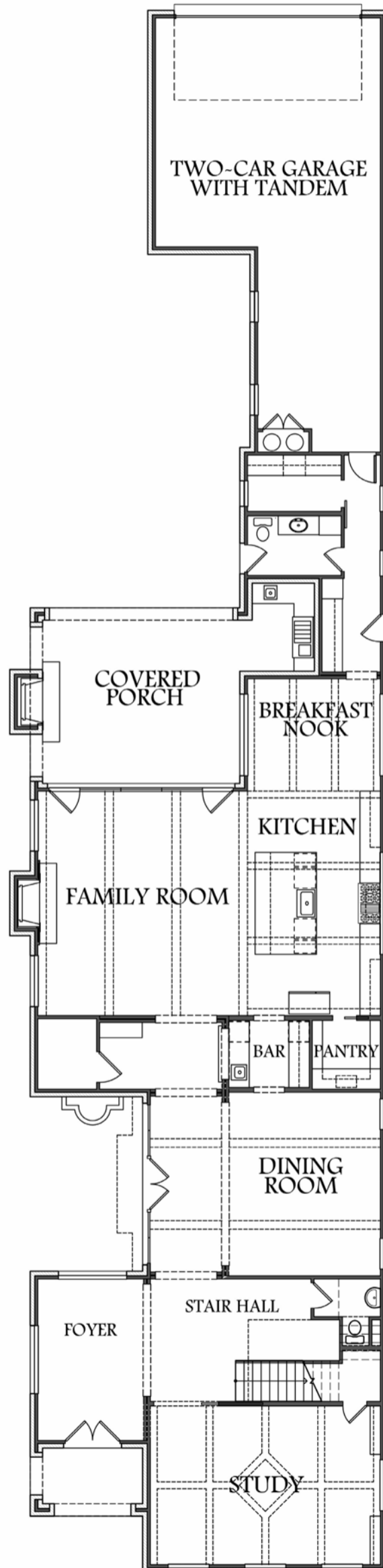


4056 DRUID

5 BEDROOMS | 5.2 BATHS | 6,316 SQUARE FEET
\$2,999,000 | HPISD | 50x227 LOT SIZE

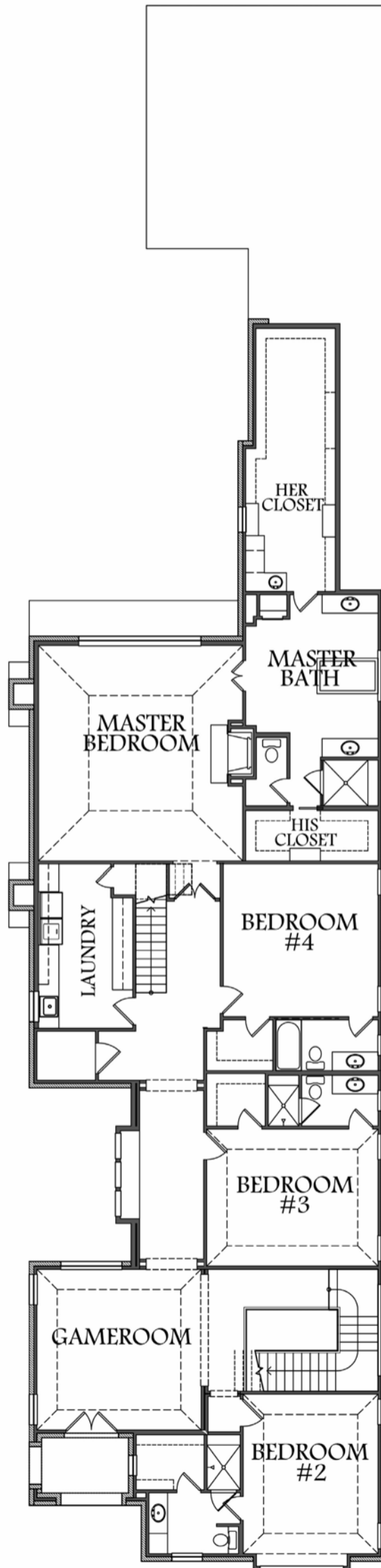


4056 DRUID



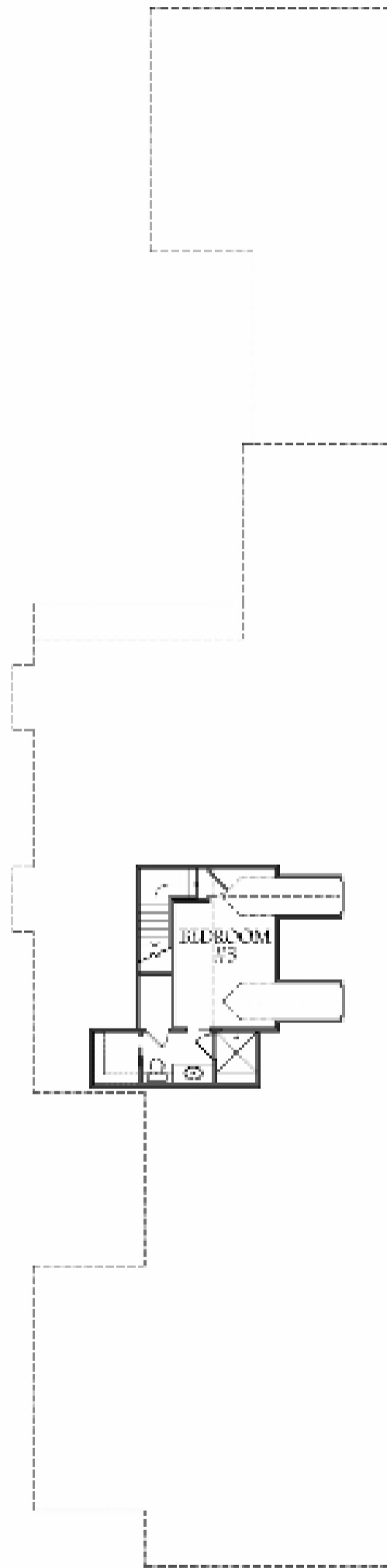
FIRST FLOOR

4056 DRUID



SECOND FLOOR

4056 DRUID



THIRD FLOOR